

INDOFINE Chemical Company, Inc.

121 Stryker Lane, Bldg. 30, Suite 1 • Hillsborough, NJ 08844 • U.S.A.

Phone: (908) 359-6778 • FAX: (908) 359-1179

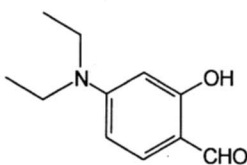
website: www.indofinechemical.com

e-mail: chemical@indofinechemical.com

CERTIFICATE OF ANALYSIS

Cat. No.: 19-473

<u>Product:</u>	4-DIETHYLAMINOSALICYLALDEHYDE (4-Diethylamino-2-hydroxybenzaldehyde)
<u>CAS Number:</u>	[17754-90-4]
<u>Lot No.:</u>	0203066
<u>Molecular Formula:</u>	C ₁₁ H ₁₅ NO ₂
<u>Molecular Weight:</u>	193.25
<u>Melting Point:</u>	61-63°C
<u>Appearance:</u>	Light rose shining powder
<u>Solubility:</u>	Soluble in chloroform
<u>Storage:</u>	Cool, dry and dark place. Light Sensitive.
<u>NMR Spectrum:</u>	Enclosed
<u>IR Spectrum:</u>	Enclosed
<u>Purity(HPLC):</u>	99+%





INDOFINE Chemical Company, Inc.

121 Stryker Lane, Bldg. 30, Suite 1 • Hillsborough, NJ 08844 • U.S.A.

Phone: (908) 359-6778 • FAX: (908) 359-1179

website: www.indofinechemical.com

e-mail: chemical@indofinechemical.com

HPLC ANALYSIS

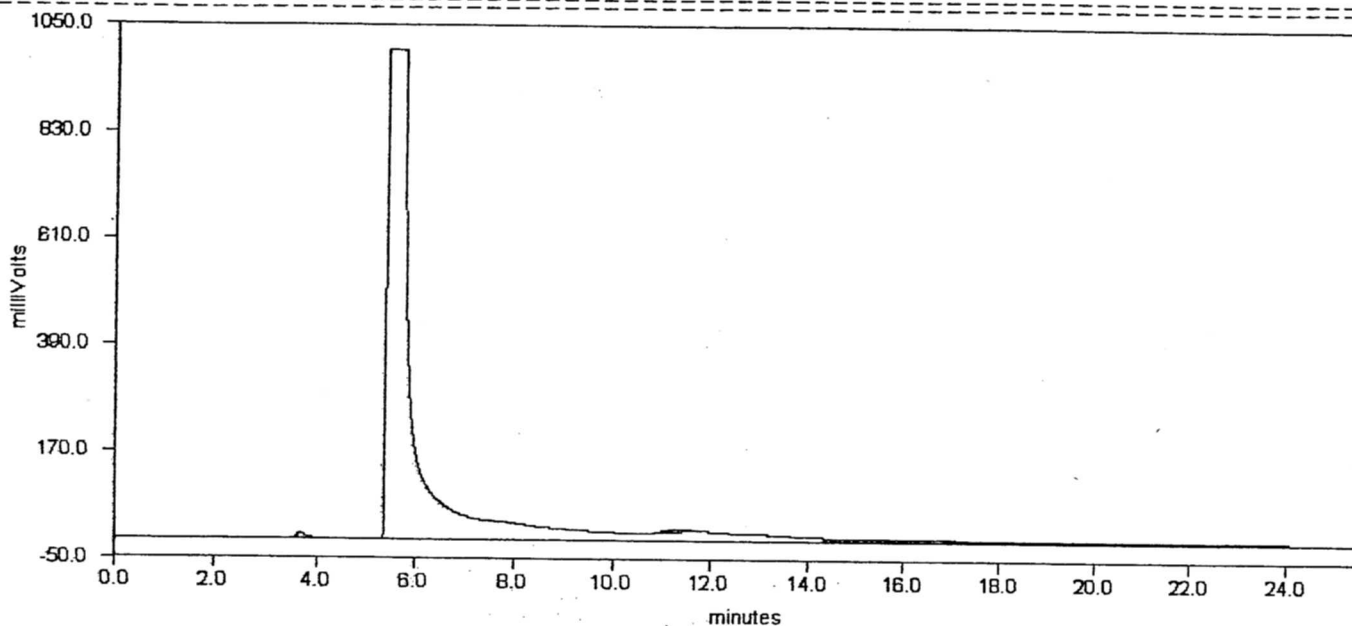
Catalog No.: 19-473

Product name: 4-Diethylaminosalicylaldehyde

Lot No.: 0203066

DELTA CHROMATOGRAPHY DATA SYSTEM

STRIPCHART PLOT FOR CHROMATOGRAM - c:\deltaw\data\np-413a.raw



DELTA CHROMATOGRAPHY DATA SYSTEM

LISTING PEAK TABLE FOR CHROMATOGRAM - c:\deltaw\data\np-413a.raw.RAW

#	Type Name	Ret.Time	Area(uVSec)	Height(mV)	Area Percent
1	MM	3.69	90802	9.7	0.2
2	BB	5.43	42770180	1006.9	99.4
3	MM	11.34	179691	4.5	0.4

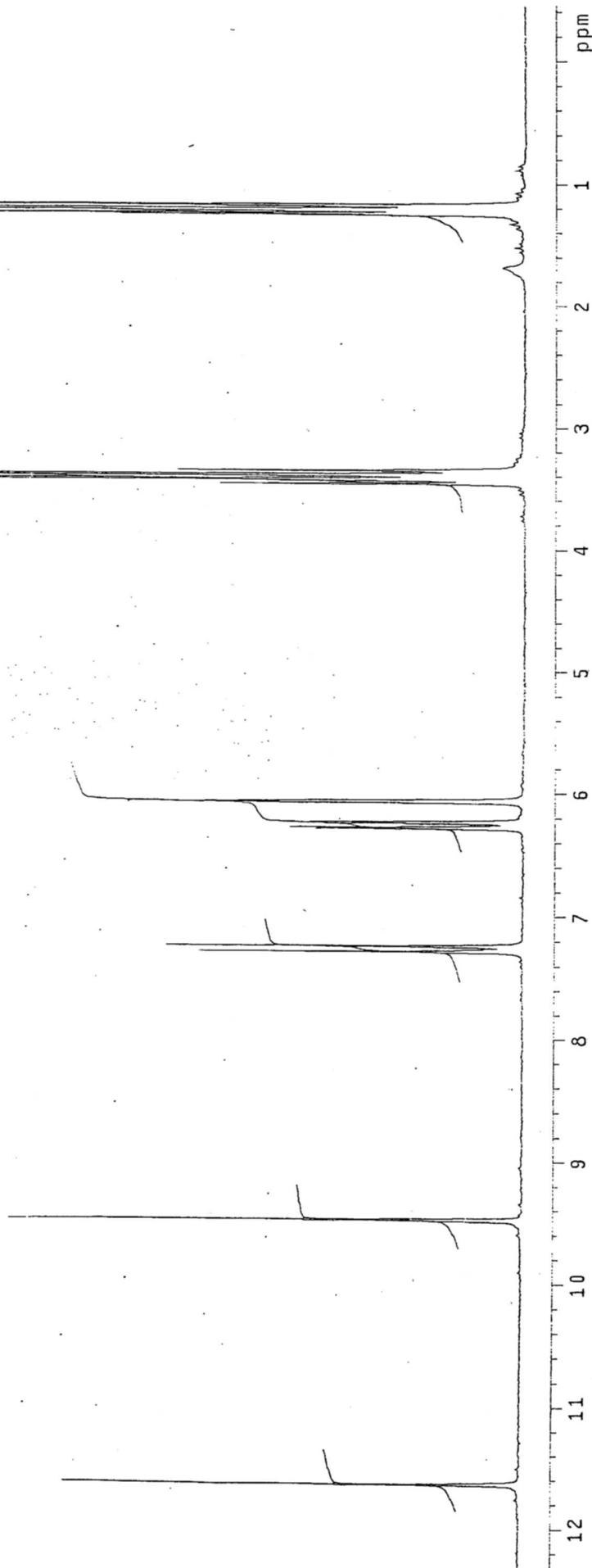
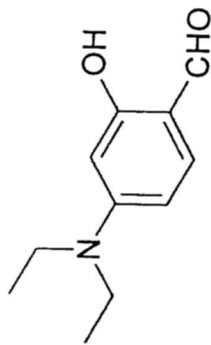


INDOFINE Chemical Company, Inc.
121 STRYKER LANE
BLDG. 30, SUITE 1
HILLSBOROUGH, NJ 08844

Catalog No.: 19-473

Product name: 4-Diethylaminosalicylaldehyde

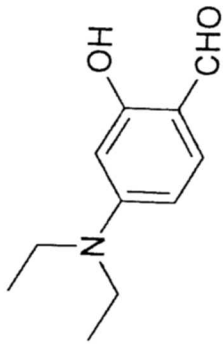
Lot No.: 0203066



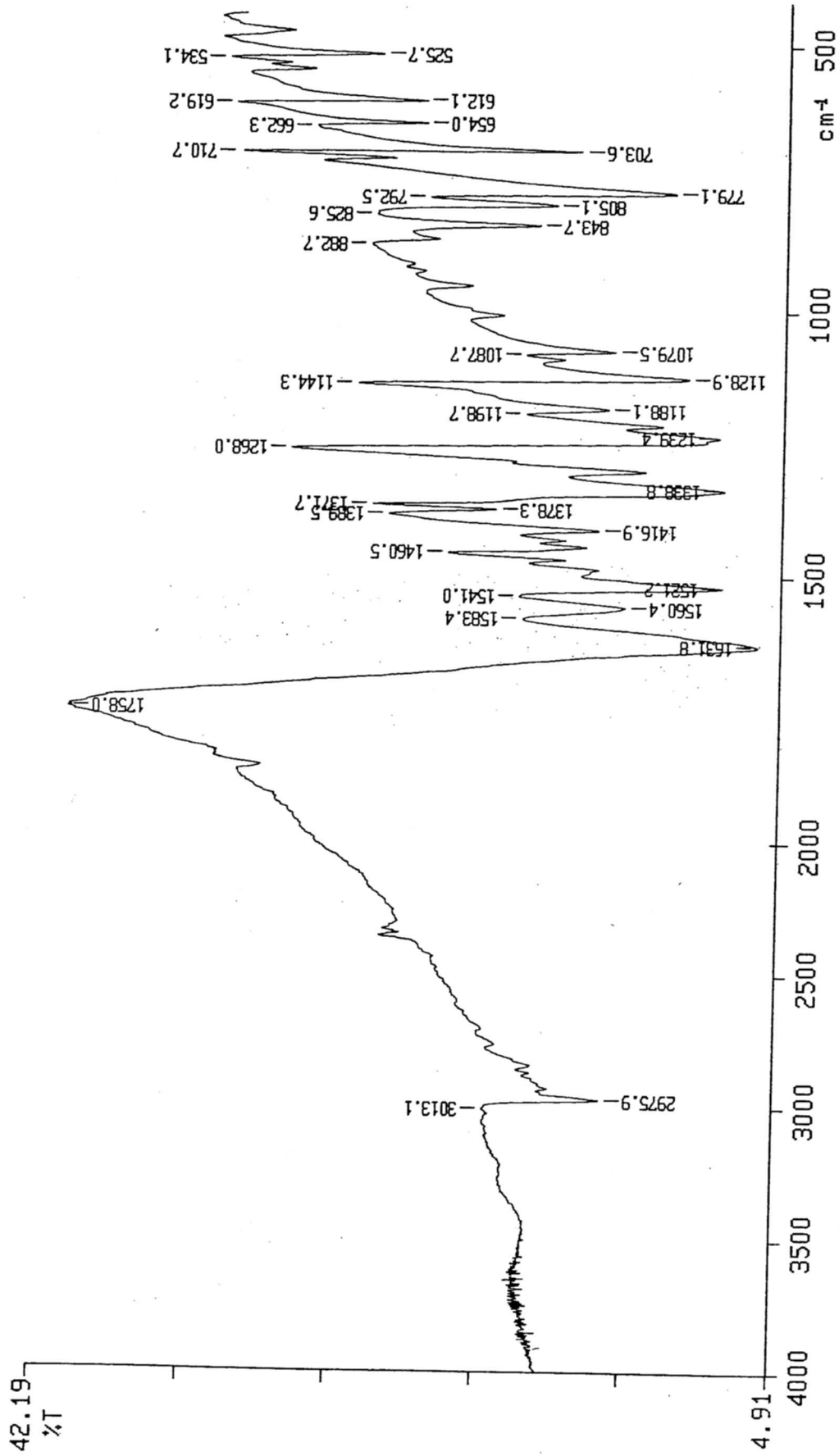


INDOFINE Chemical Company, Inc.
121 STRYKER LANE
BLDG. 30, SUITE 1
HILLSBOROUGH, NJ 08844

Catalog No.: 19-473
Product name: 4-Diethylaminosalicylaldehyde
Lot No.: 0203066



PERKIN ELMER



X: 1 scan, 4.0cm-1